

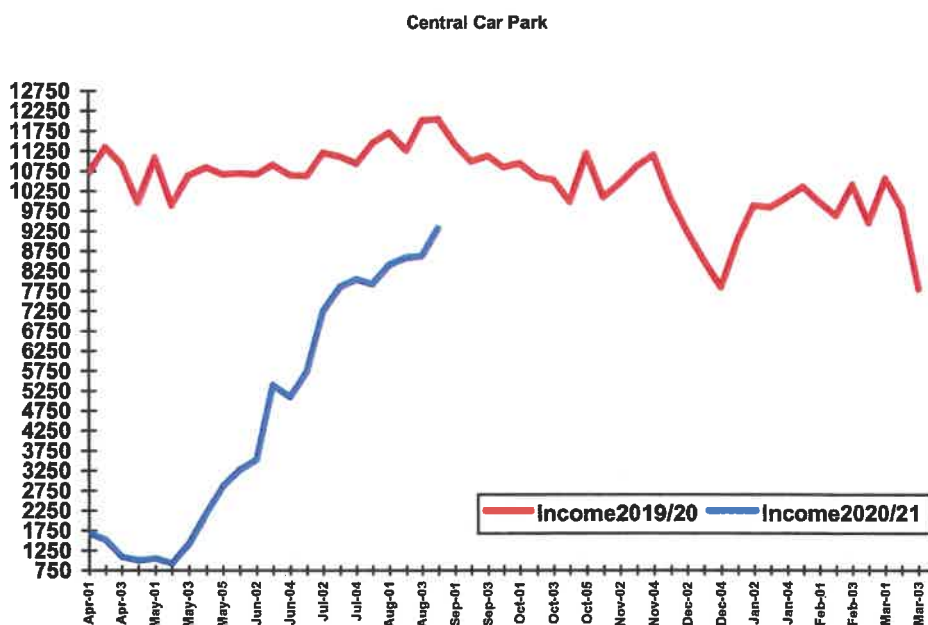
## OSWESTRY TOWN COUNCIL

### Analysis of Car Parking: Income and Usage 2020/21 and 2019/20

#### Central Car Park

The below graph illustrates the trend of income obtained from the Central Car Park for April-August of the 2020/21 financial year compared 2019/20.

Total income for April-August of 2020/21 was **£81,387** this year compared to **£201,744** last year (VAT deducted at 20%), a decrease of **60%**. Parking charges were not increased from 1<sup>st</sup> April 2020. Car Parking was made free after 6pm last year.



Over the 2020/21 period the number of tickets issued (and percentage usage comparisons between this year and last) were:

Denomination	Amount Issued	2020/21 %	2019/20	2019/20 %
50p	57,415	50	92,605	40
£1	47,273	41	105,153	44
£2	8,565	7	30,628	13
£3	2,306	2	8,110	3
£6	121	0	642	0
<b>Total</b>	<b><u>115,680</u></b>	<b><u>100</u></b>	<b><u>237,138</u></b>	<b><u>100</u></b>

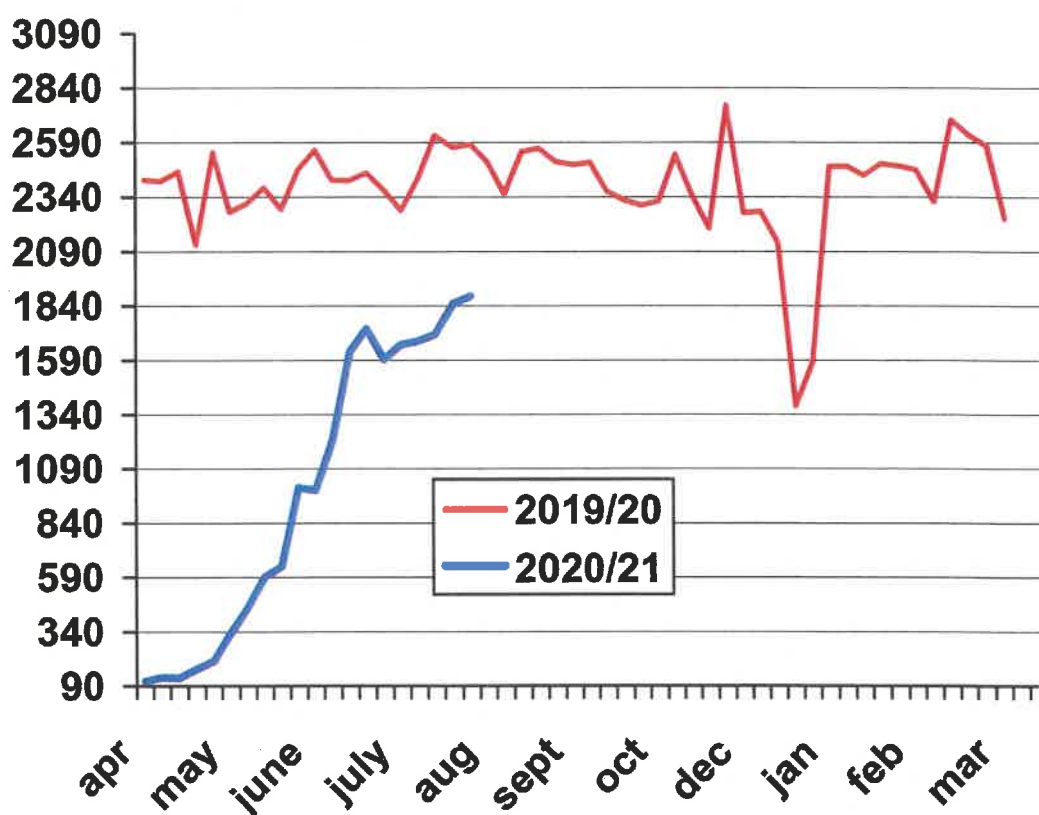
The below table outlines the total number of tickets issued over **April/August of 2020/21** and for the whole of previous years for each denomination available and the various denomination percentages.

<i>Denomination</i>	<i>Tickets Issued</i> <i>2018/19</i>	<i>Percentage Analysis</i> <i>2018/19</i>	<i>Tickets Issued</i> <i>2019/20</i>	<i>Percentage Analysis</i> <i>2019/20</i>	<i>Tickets Issued</i> <i>2020/21</i>	<i>Percentage Analysis</i> <i>2020/21</i>
<b>0hr to 1 hr</b>	<b>211,795</b>	<b>40%</b>	<b>214,930</b>	<b>40%</b>	<b>57,415</b>	<b>50%</b>
<b>1hr to 2hrs</b>	<b>234,823</b>	<b>44%</b>	<b>238,908</b>	<b>44%</b>	<b>47,273</b>	<b>41%</b>
<b>2hrs to 4hrs</b>	<b>67,644</b>	<b>13%</b>	<b>67,132</b>	<b>13%</b>	<b>8,565</b>	<b>7%</b>
<b>4hrs to 6hrs</b>	<b>16,120</b>	<b>3%</b>	<b>17,838</b>	<b>3%</b>	<b>2,306</b>	<b>2%</b>
<b>Over 6hrs</b>	<b>1,062</b>	<b>0%</b>	<b>1,341</b>	<b>0%</b>	<b>121</b>	<b>0%</b>
	<b>531,444</b>	<b>100%</b>	<b>540,149</b>	<b>100%</b>	<b>115,680</b>	<b>100%</b>

- **Horsemarket Car Park**

Income on the Horsemarket totals **£17,049** this year, **£45,018** for the same period last year (VAT deducted), a decrease of **62%**. Car parking charges were not increased on 1<sup>st</sup> April 2020. Car parking was made free after 6pm in 2019/20.

The graph below indicates the income trend, again the income for April/August 2020/21 is shown with income for 2019/20 provided as the weeks go by as a comparison.



For 2020/21, the denomination of tickets issued (and percentage usage comparisons between this year and last) are as follows:

Denomination	Amount Issued	2020/21 %	2019/20	2019/20 %
50p	10,511	43	22,528	37
70p	11,445	46	30,180	50
£2	1,982	8	6,000	10
£3	631	3	1,799	3
£6	69	0	134	0
<b>Total</b>	<b><u>24,638</u></b>	<b><u>100</u></b>	<b><u>60,641</u></b>	<b><u>100</u></b>

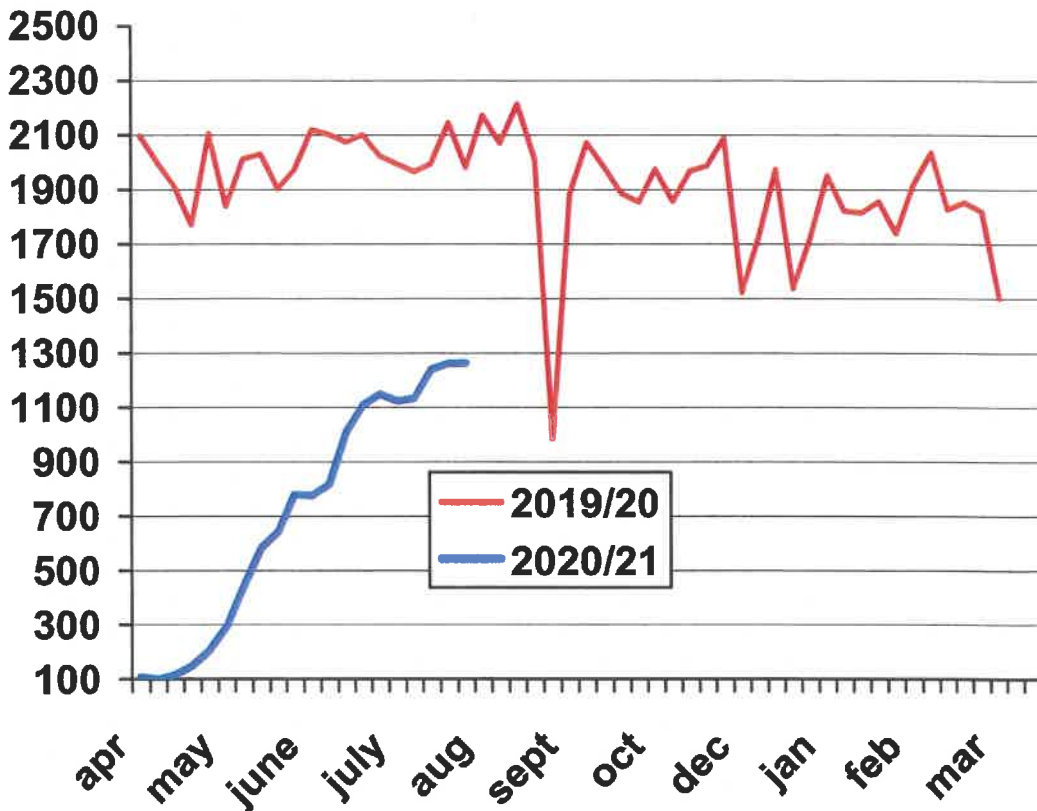
The below table outlines the total number of tickets issued over **April/August 2020/21** and for the whole of previous years for each denomination available and the various denomination percentages.

<i><b>Denomination</b></i>	<i><b>Tickets Issued 2018/19</b></i>	<i><b>Percentage Analysis 2018/19</b></i>	<i><b>Tickets Issued 2019/20</b></i>	<i><b>Percentage Analysis 2019/20</b></i>	<i><b>Tickets Issued 2020/21</b></i>	<i><b>Percentage Analysis 2020/21</b></i>
<b>0hrs to 1hr</b>	52,402	38%	51,010	37%	10,511	43%
<b>1hr to 2hrs</b>	69,237	50%	69,712	50%	11,445	46%
<b>2hrs to 4hrs</b>	13,639	10%	13,735	10%	1,982	8%
<b>4hrs to 6hrs</b>	3,018	2%	4,132	3%	631	3%
<b>Over 6hrs</b>	292	0%	442	0%	69	0%
	<b>138,588</b>	<b>100%</b>	<b>139,031</b>	<b>100%</b>	<b>24,638</b>	<b>100%</b>

• **Smithfield Street Car Park**

Income for whole of 2020/21 inclusive totals **£12,443** compared to **£36,262** last year, a decrease of **66%**. Car park charges were not increased from 1<sup>st</sup> April 2020. Car parking was made free after 6pm.

The below graph again illustrates income this year compared to last.



Tickets issued (and percentage usage comparisons between this year and last) have been as follows:

Denomination	Amount Issued	2020/21 %	2019/20	2019/20 %
50p	8,096	49	26,508	51
80p	5,984	36	19,393	37
£2	1,482	9	4,582	9
£3	801	5	1,469	3
£6	57	0	145	0
<b>Total</b>	<b>16,420</b>	<b>100</b>	<b>52,097</b>	<b>100</b>

The below table outlines the total number of tickets issued over **April-August 2020/21** and for the whole of previous years for each denomination available and the various denomination percentages.

<i>Denomination</i>	<i>Tickets Issued 2018/19</i>	<i>Percentage Analysis 2018/19</i>	<i>Tickets Issued 2019/20</i>	<i>Percentage Analysis 2019/20</i>	<i>Tickets Issued 2020/21</i>	<i>Percentage Analysis 2020/21</i>
<b>0hrs to 1hr</b>	60,389	51%	58,158	52%	8,096	54%
<b>1hr to 2hrs</b>	44,623	37%	42,930	36%	5,984	36%
<b>2hrs to 4hrs</b>	11,006	9%	9,806	9%	1,482	9%
<b>4hrs to 6hrs</b>	3,392	3%	3,315	3%	801	5%
<b>Over 6hrs</b>	298	0%	274	0%	57	0%
	<b>119,708</b>	<b>100%</b>	<b>114,483</b>	<b>100%</b>	<b>16,420</b>	<b>100%</b>

		APRIL	MAY	JUNE	JULY	AUG	SEPT	OCT	NOV	DEC	JAN	FEB	MAR
	Average per day:												
<b>MON</b>	Tickets Issued	172	260	887	960	1,381							
	Income	£162	£184	£703	£1,050	£1,291	£	£	£	£	£	£	£
<b>TUES</b>	Tickets Issued	229	424	889	1,310	1,355							
	Income	£198	£296	£707	£1,212	£1,331	£	£	£	£	£	£	£
<b>WED</b>	Tickets Issued	186	426	859	1,400	1,534							
	Income	£208	£305	£706	£1,306	£1,541	£	£	£	£	£	£	£
<b>THUR</b>	Tickets Issued	251	445	859	1,324	1,437							
	Income	£244	£339	£665	£1,143	£1,345	£	£	£	£	£	£	£
<b>FRI</b>	Tickets Issued	232	488	1,069	1,423	1,591							
	Income	£236	£342	£801	£1,282	£1,525	£	£	£	£	£	£	£
<b>SAT</b>	Tickets Issued	200	430	1,014	1,547	1,687							
	Income	£205	£334	£814	£1,474	£1,666	£	£	£	£	£	£	£

**Central Car Park: Analysis of Average Daily Income and Tickets Issued (APRIL-AUGUST 2020/21 inclusive)**  
Appendix A.

- Summary

*Total income from the three Car Parks for April to August of 2020/21 totals £110,879 (VAT deducted at 20%) compared to £283,024 last year, a decrease of 60%*

<i>Denomination</i>	<i>Tickets Issued 2018/19</i>	<i>Tickets Issued 2019/20</i>	<i>Increase (Decrease) 18/19 to 19/20</i>	<i>Percentage Change 18/19 to 19/20</i>		<i>Tickets Issued 2020/21</i>
0hrs to 1hr	324,586	324,098	-488	-0.15%		76,022
1hr to 2hrs	348,683	351,550	+2,867	+1%		64,702
2hrs to 4hrs	92,289	90,673	-1,616	-1.8%		12,029
4hrs to 6hrs	22,530	25,285	+2,755	+12%		3,738
Over 6hrs	1,652	2,057	+405	+25%		247
	789,740	793,663	+3,923	+0.5%		156,738

Roger Dyke  
Finance Officer  
**SEPTEMBER 2020**